

NEW PRODUCT - PRELIMINARY BULLETIN

Delta Rota-Beam™ Series

SUPER-LED® "ROTATING" LIGHTBAR

LIGHTBARS

100% Solid-state! No moving parts and no motors. Your eyes will tell you that it is a rotating lightbar, but it is simply the latest innovation in LED lighting from Whelen!

If you are looking for the longer dwell time and sweep of halogen rotating lights, here it is... and only the motor noise is missing!



FEATURES

- Sleek, multi-level warning lightbar featuring new Super-LED "rotating" light modules, using the latest generation of LED technology.
- Two to six Rota-Beam Super-LED, 100% Solid-State "rotating" beacons plus optional angled mirrors.
- No moving parts. No motors to wear out or malfunction.
- Thirty-two Scan-Lock™ flash patterns; some with varying flash rates for an almost unlimited choice of internally controlled warning patterns for the Rota-Beams.
- SAE Class 1 Certified.
- Multi-level for 360° of unobstructed warning.
- External photocell for low power, optional.
- Optional lower level; single or dual LR11 take-down lights.
- Optional lower level; single or dual LR11 alley lights.
- Optional lower level; Linear6™ Super-LED wide-angle warning modules. Front/rear control with up to 4 in the front and 4 in the rear.
- Cruise light mode standard on outboard Rota-Beam (adjustable).
- Clear polycarbonate outer domes, standard, are hard coated for scratch and fade resistance. Insuring your lightbar will look new for many years.
- Low current draw, moisture and vibration resistant.
- Height from base to dome is approximately 5-1/2 inches.
- Rugged extruded aluminum base will not sag or warp.
- Six-point polycarbonate mounting feet provide a stable stance on the thinner roofs of today's vehicles.
- Optional mounting kits available.
- 20' cable standard.
- Easy to install, maintain and operate with amazing warning performance.
- Available in Red, Blue, Amber and White. Split (front/rear) colors available.
- Standard current switching allows this lightbar to be easily wired to Whelen's 295SLSA6, PCCS9RW, PCCW Series or other standard current switching.
- Five year HDP® Heavy-Duty-Professional warranty.
- Dimensions: 5-1/2" (140mm) H x 16-3/4" (425mm) D x 50" (126cm) or 56" (185cm) L.

WHELEN®
ENGINEERING COMPANY, INC.

51 Winthrop Road
Chester, Connecticut 06412-0684
(860) 526-9504 • Fax: (860) 526-4078
www.whelen.com

Delta Rota-Beam™ Series

MODELS

- DS8****50", Two single color Super-LED® beacons
- DS8****50", Two split color Super-LED beacons
- DS2****56", Two single color Super-LED beacons
- DS2****56", Two split color Super-LED beacons

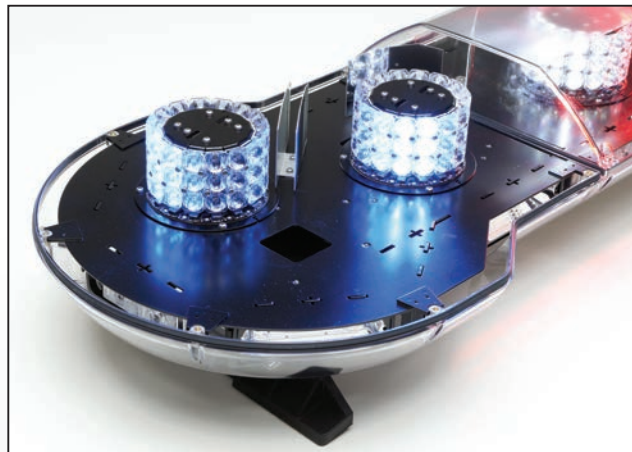
UPPER LEVEL OPTIONS

- DSRB**One single color Super-LED beacon
- DSRB**One dual color Super-LED beacon
- DSAM.....Angled mirror

LOWER LEVEL OPTIONS

- DSTLS1Two LR11 Super-LED take-down lights with 15° horizontal adjustment
- DSTLS1D.....Two dual LR11 Super-LED take-down lights with 15° horizontal adjustment
- DSALF1Two LR11 Super-LED alley lights with 15° horizontal adjustment
- DSALF1D.....Two dual LR11 Super-LED alley lights with 15° horizontal adjustment
- DSD*One Super-LED lighthouse, requires optional DSFLASH
- DSFLASHFlasher for front or rear DSD*, purchased separately, up to two per bar. Each front or rear flasher controls up to 4 lights (8 total.)

* Replace symbol in model number with letter indicating color desired:
A = Amber; B = Blue; R = Red; W = White
D = Red/White; E = Blue/White; F = Amber/White;
J = Red/Blue; K = Red/Amber; M = Blue/Amber



Whelen Engineering reserves the right to upgrade and improve products without notice.
© 2013 Whelen Engineering Company, Inc. Printed in U.S.A.
Code No. 12660A - 05/13



WHELEN[®]
ENGINEERING COMPANY, INC.

51 Winthrop Road
Chester, Connecticut 06412-0684
(860) 526-9504 • Fax: (860) 526-4078
www.whelen.com

American Employees, American Manufacturing, American Pride!